

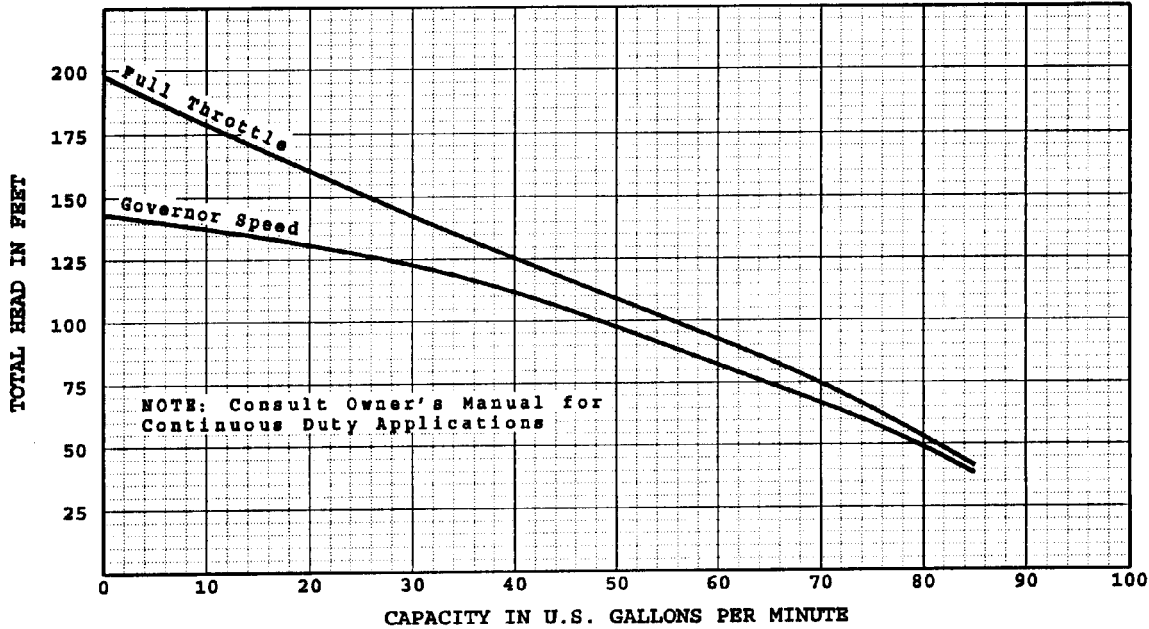


ENGINE DRIVE  
AIR COOLED  
SELF PRIMING

350-3

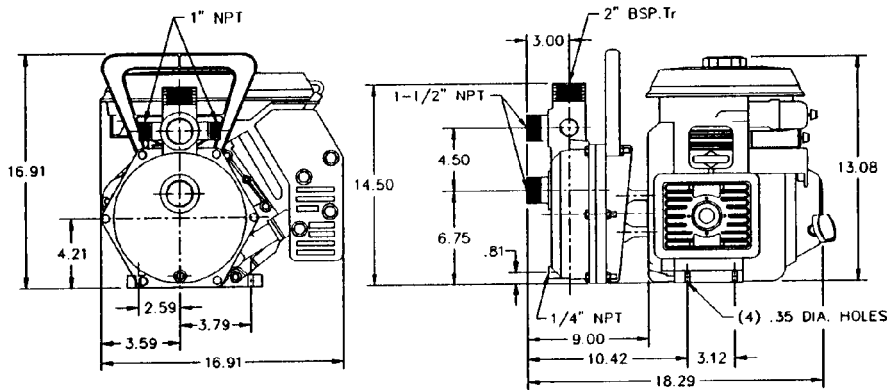
Impeller Diameter: 5.900 in.

C-3529 12/20/93



Supersedes: NEW

Based on Fresh Water @ 68 deg. F



Drawing Not to Scale

All Dimensions in Inches

SPECIFICATIONS		MATERIALS OF CONSTRUCTION		SUPERSEDES	
Max. Suction Lift	15 ft	Casing	Die-cast Aluminum	Section Dated	<b>NEW</b>
Max. Liquid Temperature	200 deg. F	Impeller	Die-cast Aluminum	Page	
Max. Diameter Solids	0.40 in	Seal Housing	Die-cast Aluminum	Date	12/20/93
Engine	Tecumseh 3 HP	Shaft Sleeve	Stainless ASTM A581-A582 Type 303	Section	<b>AC</b>
		Diffuser	Die-cast Aluminum	Page	16.0
		Neckring	Stainless Steel		
		Mech. Seal	316 Stainless Hardware/"Buna-N" Ceramic Seat, Carbon Rotating Face		

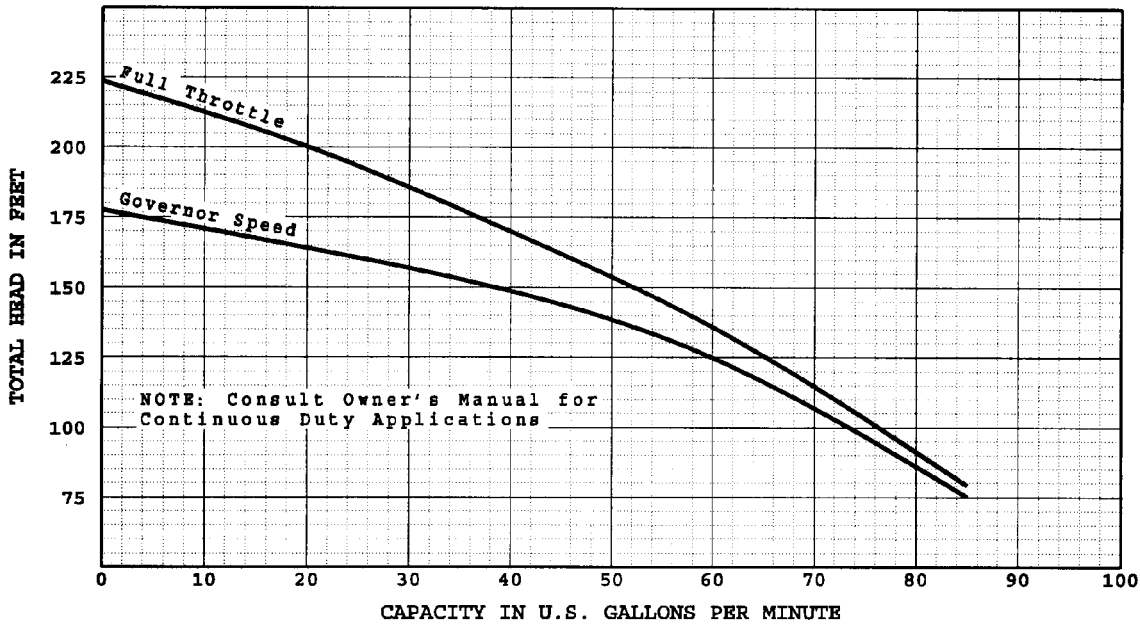


**ENGINE DRIVE  
AIR COOLED  
SELF PRIMING**

**550-5**

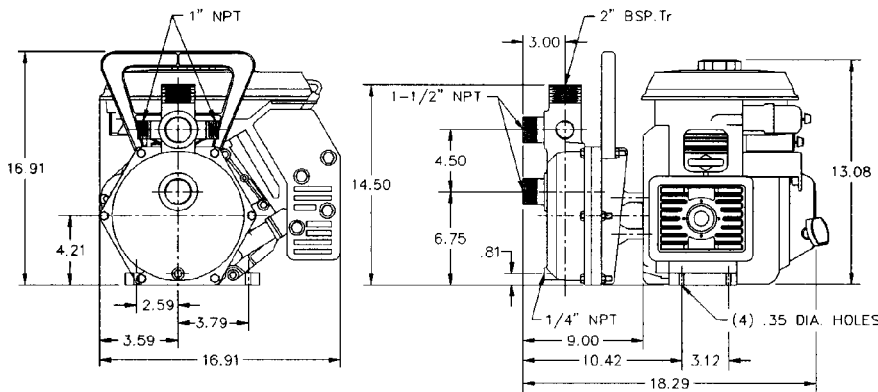
Impeller Diameter: 6.500 in.

C-3531 12/20/93



Supersedes: NEW

Based on Fresh Water @ 68 deg. F



Drawing Not to Scale

All Dimensions in Inches

SPECIFICATIONS		MATERIALS OF CONSTRUCTION		SUPERSEDES	
Max. Suction Lift _____	25 ft	Casing _____	Die-cast Aluminum	Section _____	<b>NEW</b>
Max. Liquid Temperature _____	200 deg. F	Impeller _____	Die-cast Aluminum	Dated _____	
Max. Diameter Solids _____	0.31 in	Seal Housing _____	Die-cast Aluminum	Page _____	
Engine _____	Tecumseh 5 HP	Shaft Sleeve _____	Stainless ASTM A581-A582 Type 303	<b>Date</b> 12/20/93	<b>AC</b>
		Diffuser _____	Die-cast Aluminum	<b>Section</b>	
		Neckring _____	Stainless Steel	<b>Page</b> 18.0	
		Mech. Seal _____	316 Stainless Hardware/"Buna-N" Ceramic Seat, Carbon Rotating Face		

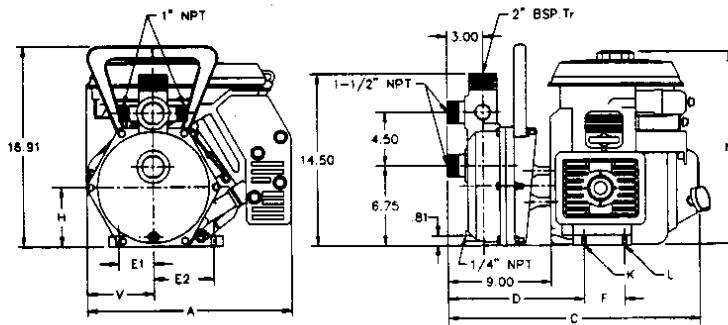
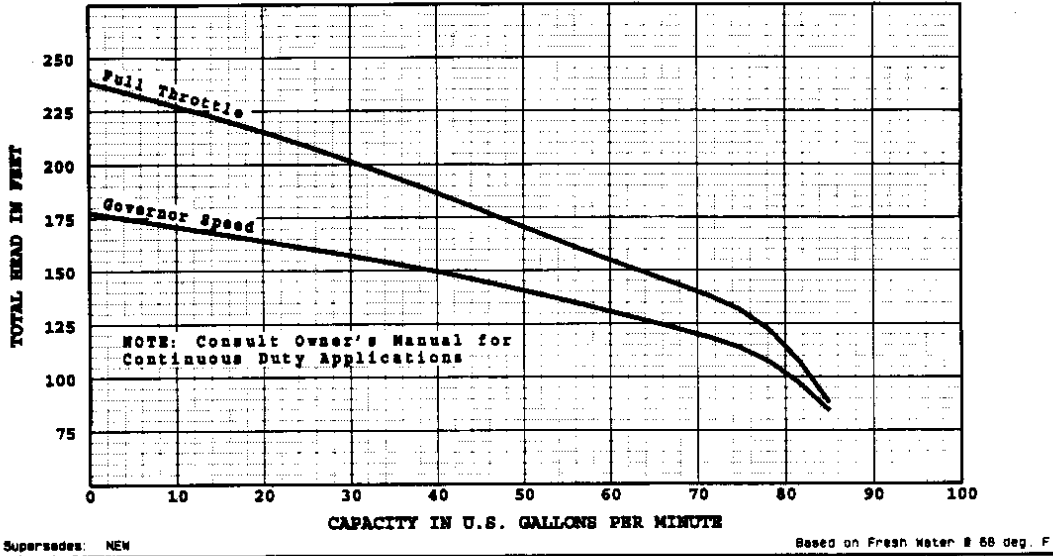


ENGINE DRIVE  
AIR COOLED  
SELF PRIMING

550-5.5

Impeller Diameter: 6.500 in.

C-3532 12/20/93



ENGINE NAME & HP	A	C	D	E1	E2	F	H	K	L	N	V
BRIGGS & STRATTON 5.5 HP	14.34	19.72	10.48	2.60	4.33	3.15	4.17	(2) .35 X .75 SLOTS	(4) .35 DIA. HOLES	14.50	4.78
HONDA 5.5 HP	14.30	18.90	10.41	2.80	3.80	3.12	4.20	(2) .35 X .55 SLOTS	(2) .35 DIA. HOLES	13.20	4.90

Drawing Not to Scale

All Dimensions in Inches

SPECIFICATIONS

Max. Suction Lift \_\_\_\_\_ 25 ft  
 Max. Liquid Temperature \_\_\_\_\_ 200 deg. F  
 Max. Diameter Solids \_\_\_\_\_ 0.31 in  
 Engine \_\_\_\_\_ B & S Vanguard 5.5 HP  
 Optional Engine \_\_\_\_\_ Honda 5.5 HP

MATERIALS OF CONSTRUCTION

Casing \_\_\_\_\_ Die-cast Aluminum  
 Impeller \_\_\_\_\_ Die-cast Aluminum  
 Seal Housing \_\_\_\_\_ Die-cast Aluminum  
 Shaft Sleeve \_\_\_\_\_ Stainless ASTM A581-A582 Type 303  
 Diffuser \_\_\_\_\_ Die-cast Aluminum  
 Neckring \_\_\_\_\_ Stainless Steel  
 Mech. Seal \_\_\_\_\_ 316 Stainless Hardware/"Buna-N"  
 Ceramic Seat, Carbon Rotating Face

SUPERSEDES

Section Dated **NEW**  
 Page

Date 12/20/93

Section **AC**

Page 19.0

