

# Winters Gauges

## LF Series

### Features:

2 1/2" dial with black and red markings  
1/4" npt bottom or back connection  
304 stainless steel case  
Brass internals  
Liquid filled, 1.6% accuracy ANSI/ASME Grade A  
Restrictor screw standard

### Applications:

Pumps, compressors, hydraulic presses & machinery, motors, winches etc. Whenever a quality liquid filled gauge is required.

### Ranges stocked:

0-30", 30"-0-30", 30"-0-100, 0-15, 0-30, 0-60,  
0-100, 0-160, 0-200, 0-300, 0-600, 0-1500,  
0-3000, 0-5000, 0-10000



## Contractor Series

### Features:

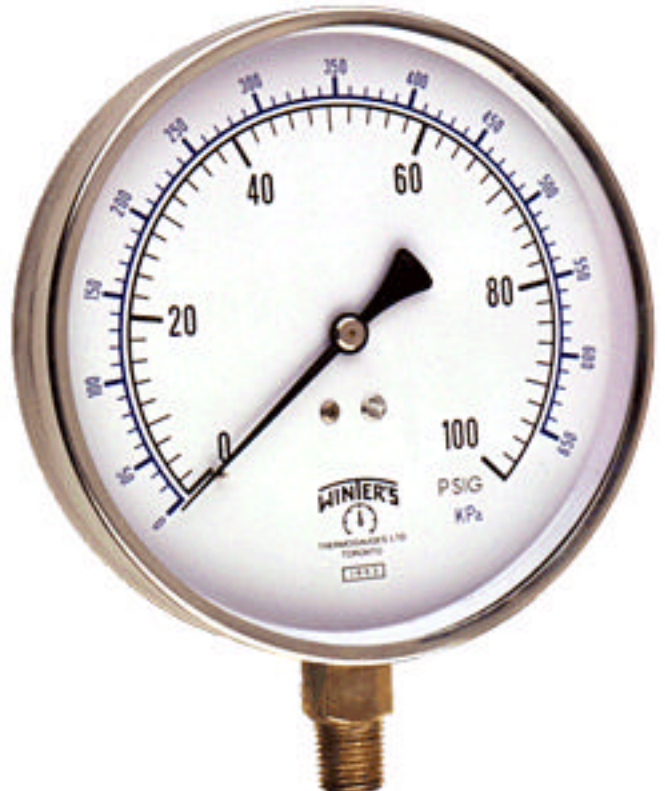
4.5" (115mm) dial  
1/4" npt bottom connection  
Stainless steel case and ring  
Brass internals  
Restrictor screw  
Recalibrator standard  
1% of full scale accuracy, ANSI/ASME Grade 1A

### Applications:

Heating, plumbing, air conditioning, and ventilating equipment manufacturers and contractors.

### Ranges stocked:

0-60, 0-100, 0-160, 0-200, 0-300, 0-600



# Winters Gauges

## Process Series

### Features:

4 1/2" dial with black and red markings  
1/2" npt bottom or back connection  
Black impact resistant phenolic case  
Integral back flange  
316SS internals  
Safety blowout backplate, solid front  
Dry, 0.5% accuracy ANSI/ASME Grade 2A  
Filled, 1% accuracy ANSI/ASME Grade 1A

### Applications:

Process, chemical & petroleum industries etc. & severe service applications where operator safety is a factor.

### Ranges stocked:

0-60, 0-100, 0-160, 0-200, 0-300, 0-600



## Economy Series

### Features:

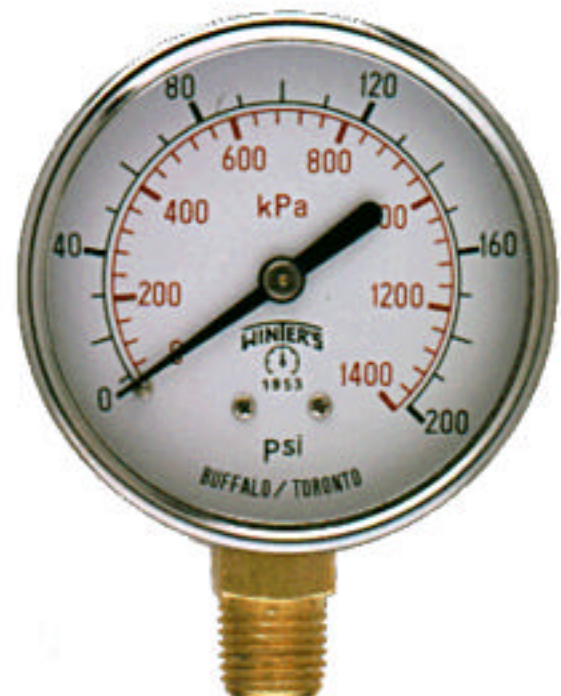
2.5" (115mm) dial  
1/4" npt bottom connection  
Steel case  
Brass internals  
3% - 2% - 3% accuracy, ANSI/ASME Grade B

### Applications:

Measurement of steam, air, oil, water, and other pressure media

### Ranges stocked:

0-30", 30"-0-30", 30"-0-100, 0-15, 0-30, 0-60, 0-100, 0-160, 0-200, 0-300, 0-600, 0-3000, 0-5000



# Winters Gauges

## Low Pressure Series

### Features:

2 1/2" dial with black and red markings  
1/4" npt bottom or back connection  
Steel case  
Brass internals  
Restrictor screw  
1% accuracy ANSI/ASME Grade 1A

### Applications:

For the measurement of low pressures of liquids and gases. Ideal for air flow indicators, liquid level indicators and draft gauges.

Ranges stocked: in inches of H<sub>2</sub>O

0-15", 0-32", 0-55", 0-100", 0-200"

