

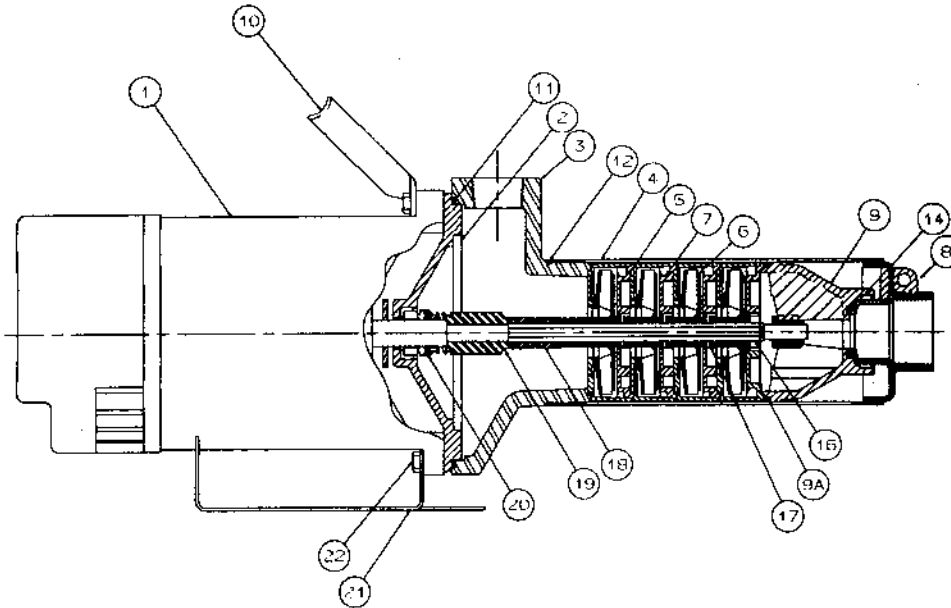
PRESSURE BOOSTER PUMP PARTS LIST

Ref. No.	Part No.	Description	Qty. Req'd.
1	24427A000	1/2 HP, 1 Phase Motor	1
1	24428A000	3/4 HP, 1 Phase Motor	1
1	26262A000	1 HP, 1 Phase Motor	1
1	26262A000	1-1/2 HP, 1 Phase Motor	1
1	24490A000	3/4 HP, 3 Phase Motor	1
1	24491A000	1 HP, 3 Phase Motor	1
1	26262A001	1-1/2 HP, 3 Phase Motor	1
2	24452C000	Seal Plate	1
3	26231D000	Adapter Case	1
4	See Below	Shell	1
5	23149B030	Housing, 5 GPM	See Below
5	23152B030	Housing, 8 GPM	See Below
5	23155B030	Housing, 12 GPM	See Below
5	23158B030	Housing, 20 GPM	See Below
6	23151B030	Diffuser, 5 GPM	See Below
6	23154B030	Diffuser, 8 GPM	See Below
6	23157B030	Diffuser, 12 GPM	See Below
6	23106B030	Diffuser, 20 GPM	See Below
7	23150B030	Impeller, 5 GPM	See Below
7	23153B030	Impeller, 8 GPM	See Below
7	23516B030	Impeller, 12 GPM	See Below
7	24644B000	Impeller, 20 GPM	See Below

Ref. No.	Part No.	Description	Qty. Req'd
8	26319B000	Discharge Bowl	1
9	26272B010	Bearing Housing	1
9A	05876A066	*O* Ring	1
10	26237B001	Handle	1
11	05014A157	Gasket	1
12	05876A157	*O* Ring	1
13	05004A099	Bushing 1-1/4 x 3/4 Plastic	1
13	05004A100	Bushing 1 x 3/4 Plastic	1
14	05014A199	Gasket	1
16	See Below	Shaft	1
17	23162A000	Thrust Washer	See Below
18	23131A000	Spacer	2
19	23164B003	Coupling	1
20	22447A000	Seal	1
21	25383B002	Base	1
22	19101A022	3/8 Cap Screw	4
24	21628B022	Cord 115 Volt (not shown)	1

NOTE: If shell (item 4) or discharge bowl (item 8) is needed for pump built prior to August 1, 1995, both the shell and discharge bowl need to be ordered.

Myers PB Series Boosters



Catalog Number	Shell Part No.	Shaft Part No.	Qty. Req. for Ref. No. 5, 6, 7	Qty. Req. For Ref. No. 17
PB71-5	26300B131	26415B095	13	19
PB51-8	26300B105	26415B001	8	9
PB71-8	26300B121	26415B002	10	11
PB101-8	26300B145	26415B002	13	14
PB101-12	26300B128	26415B012	10	11
PB151-12	26300B163	26415B006	14	15
PB151-20	26300B133	25415B091	9	10